



GADD NET

AutoGADD User Guide

Published March, 2013
www.gaddsoftware.com

Table of content

1.	Introduction	3
2.	Prerequisites.....	3
3.	Quick intro using QS010 as example	4
3.1.	Start GADDxl and prepare QS010	4
3.2.	Define QS010 as a AutoGADD query.....	4
3.3.	Start AutoGADD	5
3.4.	Schedule AutoGADD job with Windows Scheduler	8

1. Introduction

This document contains short intro and illustration on how to set up AutoGADD. With AutoGADD you can have queries executed automatically. You can e.g. define several queries and have them executed via AutoGADD and the result saved as HTML, PDF or other format.

It is also possible to define that AutoGADD should start e.g. every Monday at 8.00 AM via Windows Scheduler. In this way you can automate the process of generating reports.

If you have any questions please do not hesitate to contact us, support@gaddsoftware.com.

Hope you will find this document useful!

/The GADD Team

2. Prerequisites

To demonstrate we will use the GADD NET evaluation version.

3. Quick intro using QS010 as example

In this chapter we will prepare and execute example query QS010 with AutoGADD.

3.1. Start GADDxl and prepare QS010

Start the GADDxl application and select query QS010 (1). Define the selection parameters (2) that you want and execute the query (3) and check that the result (4) is what you want.

The screenshot shows the GADDxl application window with the following components:

- Tree View (Left):** Shows a folder 'Example A, using demo data' containing 'TotalSale - Basic (QS010)' (highlighted with a blue box and labeled '1.'). Other folders include 'Example B, using demo data' and 'Example C, using demo data'. A blue box labeled '2.' highlights the 'TotalSale - Basic (QS010)' entry.
- Query Parameters Dialog (Top Right):** Contains a table with the following data:

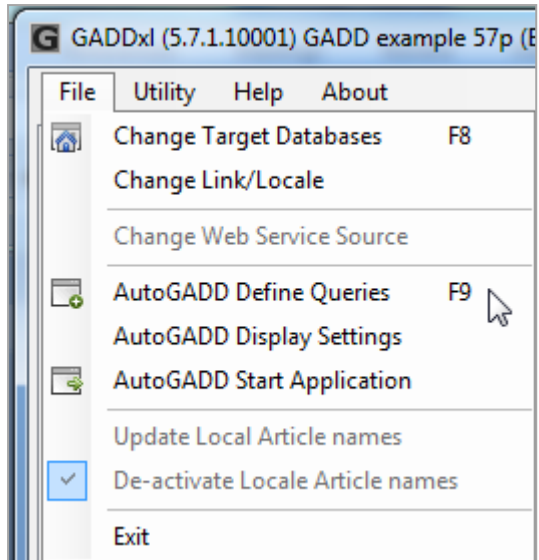
Name	Operator	Value
From date	>=	2012-02-05
To date	<	2013-03-05
Country	Like	%
Product type	in	BASKET', 'RUGBY', 'TENNIS', 'GOLF

 Buttons for 'Execute', 'Save Report', and 'Open Report' are visible below the table. A blue box labeled '3.' highlights the 'Execute' button.
- Data Table (Bottom):** Displays the results of the query. A blue box labeled '4.' highlights the table content.

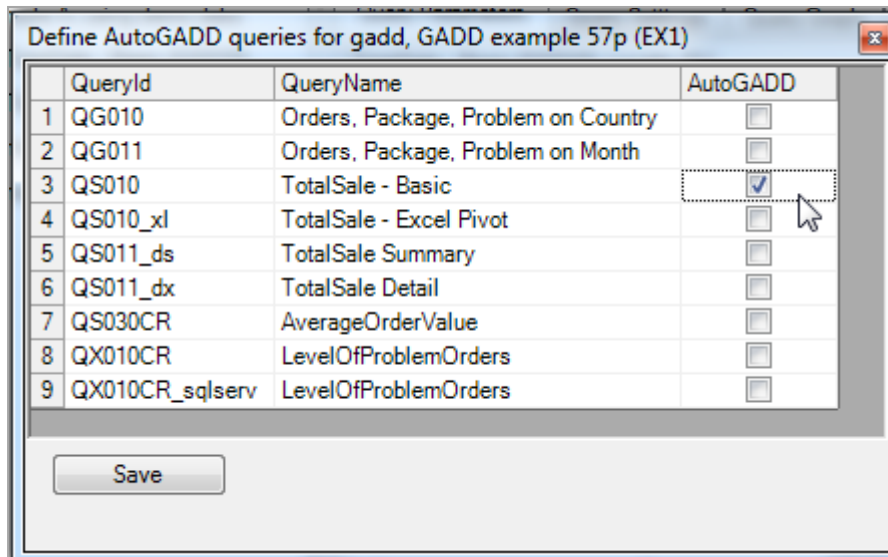
DeliveryDate	CountryCode	CountryCity	TotalAmount	NoOfOrders
Grand Total			4141 738 827	30 226
Total for 2012-02-05			52 556 782	404
Total for CN			12 814 956	99
2012-02-05	CN	KUNMING	2 062 129	15
		NANKING	4 686 041	30
		PENGPU	3 621 399	46
		SHANGHAI	1 605 387	4
		TSINAN	840 000	4
Total for NO			5 832 000	15
2012-02-05	NO	NARVIK	1 757 600	4
		OSLO	686 800	3
		STAVANGER	3 387 600	8
Total for SE			16 977 040	148
2012-02-05	SE	ENGELHOLM	1 605 387	4
		HALMSTAD	127 190	17
		HELSINGBORG	840 000	4
		LANDSKRONA	3 621 399	46
		LUND	2 062 129	15
		MALMO	4 686 041	30
TRELLEBORG	4 034 894	32		
- Status Bar (Bottom):** Displays the message: 'Query QS010 execution completed. Processing the result. Query QS010 executed 2013-03-05 at 11:02:53. Execution took 0,2 sec. 1305 rows retrieved. Proc'.

3.2. Define QS010 as a AutoGADD query

Before we start AutoGADD we need to define which query/queries that should be executed automatically. Open the 'AutoGADD Define Queries' dialog via the File menu.



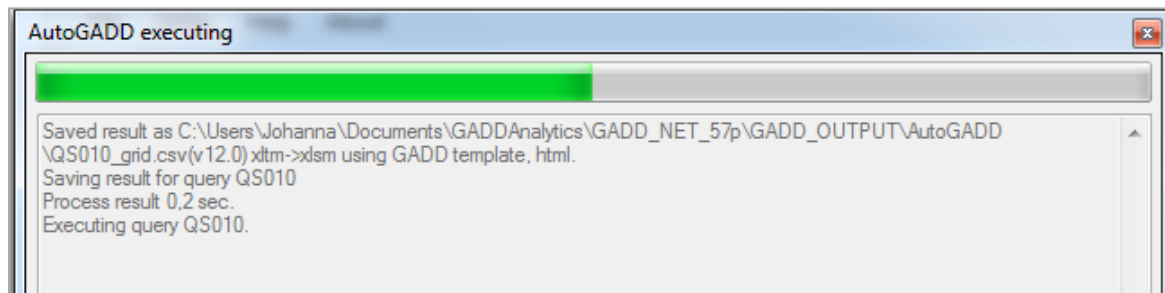
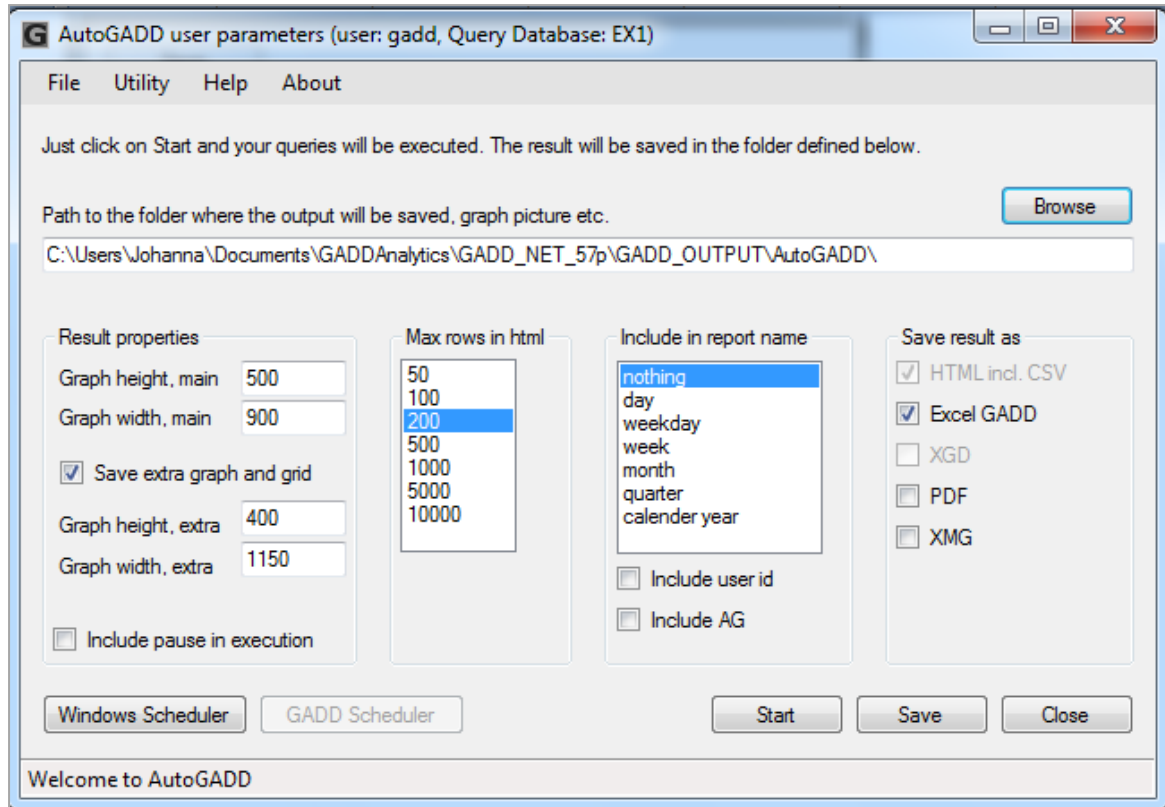
Check the queries and click Save.



3.3. Start AutoGADD

Open the AutoGADD application via the File menu, 'AutoGADD Start Application'. Enter your credentials (note that it needs to be the same user ID as we used to define the AutoGADD queries).

If you are happy with the default values, i.e. output path, result export format, file extensions you can start AutoGADD by clicking 'Start'. Your queries will now be executed automatically.



To view your result, open the generated HTML page. Here you can find an overview of your queries in the Report Viewer. To open the result in MS Excel, select a query and drill down and click the .xlsm link.

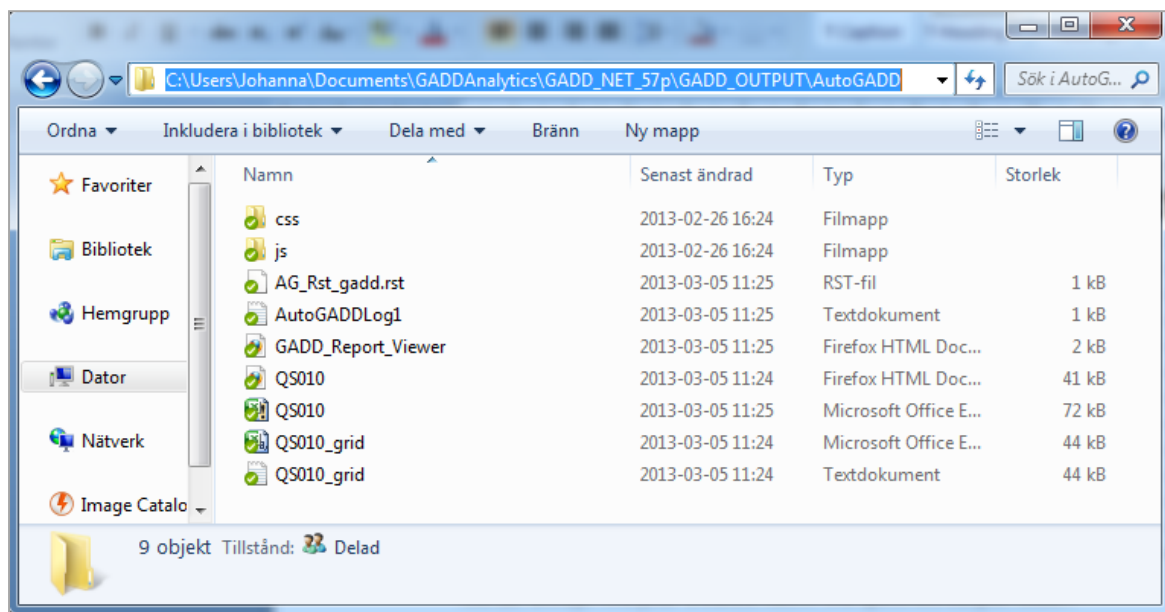
There are more than 200 rows. The 200 first rows are displayed above. All rows are available in [QS010.xlsm](#).

	A	B	C	D	E
1	DeliveryDate	CountryCode	CountryCity	TotalAmount	NoOfOrders
2	2012-02-05	CN	KUNMING	2062129	15
3	2012-02-05	CN	NANKING	4686041	30
4	2012-02-05	CN	PENGPU	3621399	46
5	2012-02-05	CN	SHANGHAI	1605387	4
6	2012-02-05	CN	TSINAN	840000	4
7	2012-02-05	NO	NARVIK	1757600	4
8	2012-02-05	NO	OSLO	686800	3
9	2012-02-05	NO	STAVANGER	3387600	8
10	2012-02-05	SE	ENGELHOLM	1605387	4
11	2012-02-05	SE	HALMSTAD	127190	17
12	2012-02-05	SE	HELSINGBORG	840000	4
13	2012-02-05	SE	LANDSKRONA	3621399	46
14	2012-02-05	SE	LUND	2062129	15

You can always find your created files in the specified output folder.

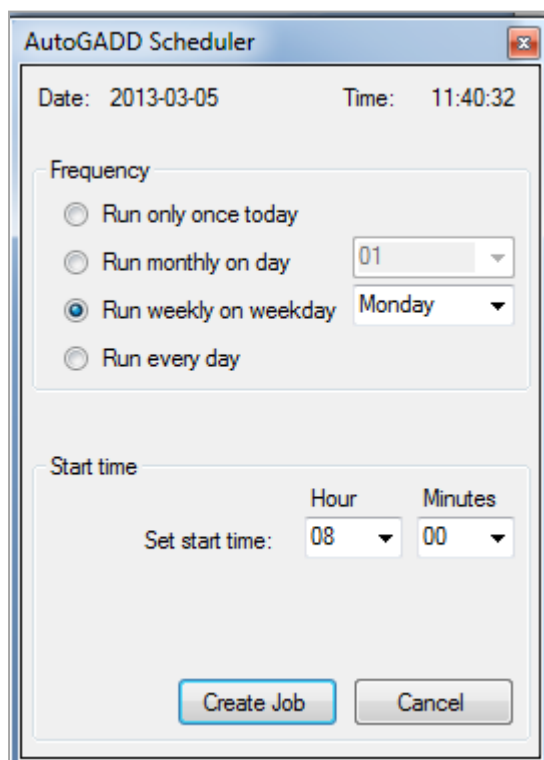
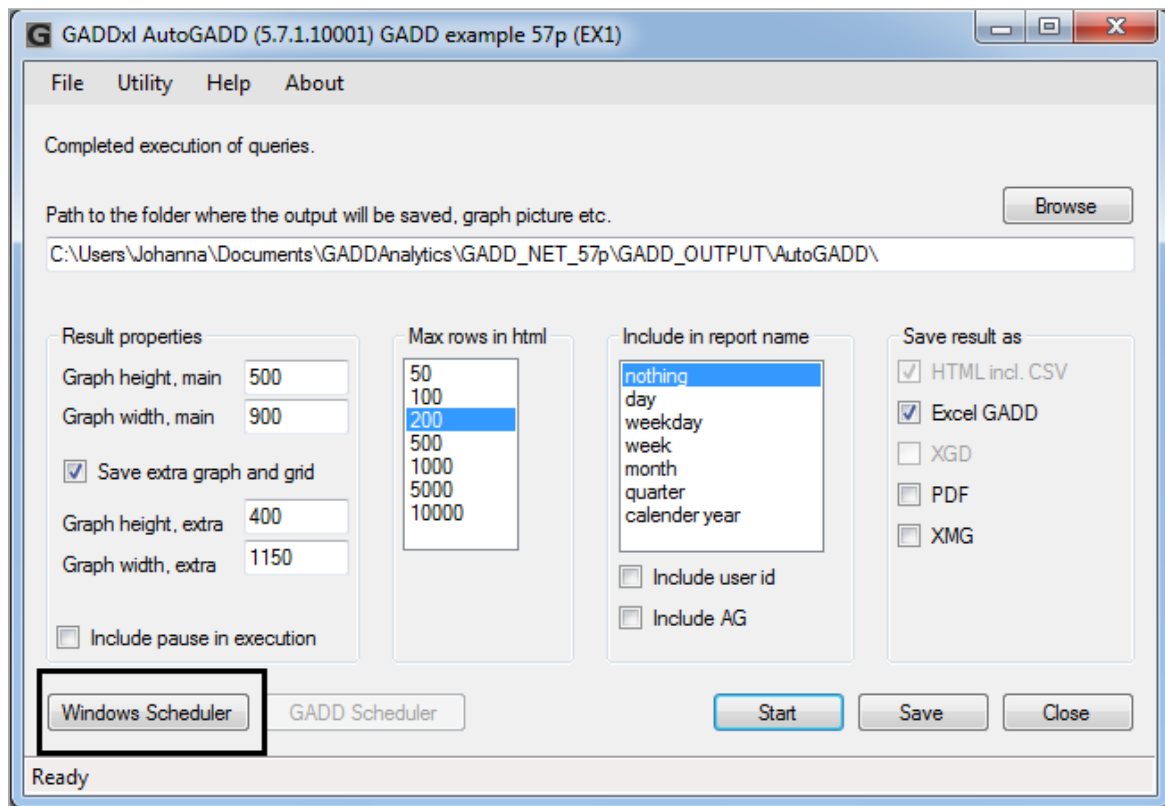
Path to the folder where the output will be saved, graph picture etc. Browse

C:\Users\Johanna\Documents\GADDAnalytics\GADD_NET_57p\GADD_OUTPUT\AutoGADD\

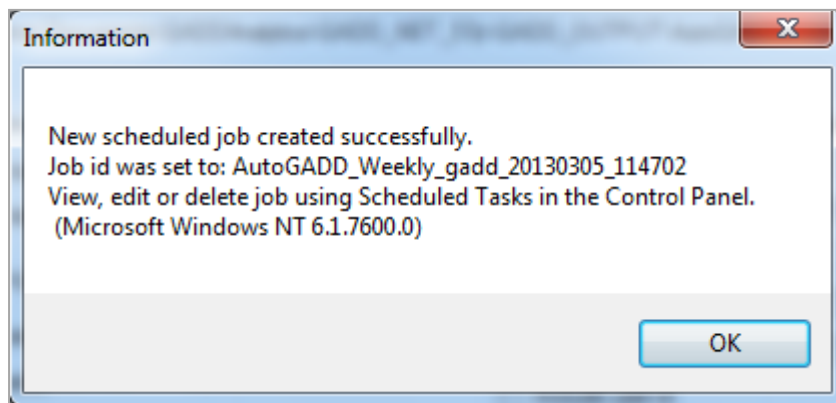


3.4. Schedule AutoGADD job with Windows Scheduler

If you want to run a report i.e. every Monday at 8.00 AM you can schedule a task with the Windows Scheduler. In the AutoGADD dialog, select 'Windows Scheduler'.



Select your options and click 'Create Job'. Your job will now be executed every Monday at 8.00 AM.



To view, edit or delete your task, open the Windows Scheduler via the Control Panel.

